

# Sandcastle Community Center

*Kiawah Island*  
COMMUNITY ASSOCIATION, INC. 

A photograph of the Sandcastle Community Center, a large, multi-story building with a prominent tower on the left side. The building is situated on a grassy hillside. The text is overlaid on the image in a dark green, serif font.

**Sandcastle Community Center**  
Providing a Welcoming Environment  
to Members and their Guests

# Permitted Guests

- Accompanied Guests
- Unaccompanied Guests
  - Family Guests
  - Sponsored Guests: short-term and yearly
- All guests must be pre-registered, with the proper forms on file and are subject to applicable guest fees.
  - Guest forms may be found on the association website at [www.kica.us](http://www.kica.us).
- For fee information, contact Sandcastle member services.



# Accompanied and Family Guests

- Accompanied Guests
  - Accompanied by the member or a registered family guest.
  - Subject to family guest fees.
- Family guests include:
  - Parents, grandparents, adult children, grandchildren and siblings.
- A family guest pass is issued when:
  - A family member permission form is on file.
  - The family member checks in to the Sandcastle lobby with picture identification, such as a driver's license.
- Adult Child Yearly Pass
  - Includes adult child, spouse and dependent children.



# Sponsored Guests

- Sponsored guests include:
  - Extended family, friends and anyone not renting from the sponsoring member.
- A sponsored guest pass is issued when:
  - A sponsored guest form is on file.
  - The sponsored guest checks in to the Sandcastle lobby with picture identification, such as a driver's license.
- Pool access may be restricted the week before and after a major holiday, based on pool use (Memorial Day, July 4, etc).
- May not displace a member with regard to both facility use and event attendance.
- May not bring additional guests to the facilities.



A large, multi-story building with a prominent turret on the left side, situated on a grassy hill. The building has a dark roof and light-colored siding. The text is overlaid on the image.

**Sandcastle Community Center**  
Providing Quality Amenities to  
Island Residents



# Sandcastle Pool

- Staffed from Memorial Day to Labor Day.
- Includes a spacious pool with lap lanes, along with a separate children's pool.
- The Castle Grille serves pool patrons from Memorial Day to Labor day.
- The members' sun deck overlooks the dunes and beach.



# Sandcastle Fitness

- The weight room is equipped with state-of-the-art machines, including Cardiovision, for members' enjoyment.
- The aerobics room hosts a variety of strength training, cardio and core classes from Monday through Saturday.
- Water aerobics is held from April through October.



# Library Offerings

- Sandcastle Lending Library
  - Available 7 days per week, year-round.
  - Donations must be current and in good condition.
  - A varying selection of games, puzzles and books-on-tape are also available.
- Educational Library
  - A variety of educational selections available upon request.



# Facility Rentals

- The Sandcastle's upstairs event rooms are available for a variety of private events.
  - Holds up to 180 people.
- The Sandcastle's pool deck and grille kitchen are available for rental in off-season months.
- The Cinder Creek facility is available for smaller, less formal gatherings.
  - Holds up to 75 people.
- See the Sandcastle's event facility coordinator for rental and fee information.



A photograph of the Sandcastle Community Center, a large, multi-story building with a prominent turret on the left side. The building is situated on a grassy hillside. The text is overlaid on the image in a dark green, serif font.

**Sandcastle Community Center**  
Providing Community Building  
Events and Programs

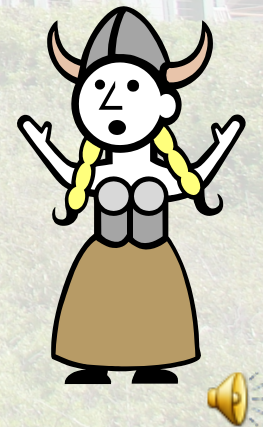
# Sources of Information

- Information regarding Sandcastle events is disseminated through several methods.
  - Kiawah Island *Digest*
  - Association Website
  - Lobby Flyers and Brochures
  - Periodic Instant News Flash E-mails



# Ongoing Opportunities

- Opera Lite with Dr. John Benzel
  - Each fall and spring on Mondays from 4 - 5:30 p.m.
  - Open to all, no reservation required.
- Italian Conversation with Kiki Anderson
  - Each fall and spring on Thursdays from 1 - 3 p.m.
- Beginning Italian with Rich Bennett
  - Each fall and spring on Thursdays prior to Italian Conversation.
- Mah-Jongg Class with Barbara Berger
  - Periodically each fall and spring on Wednesdays.
- Bridge Lessons



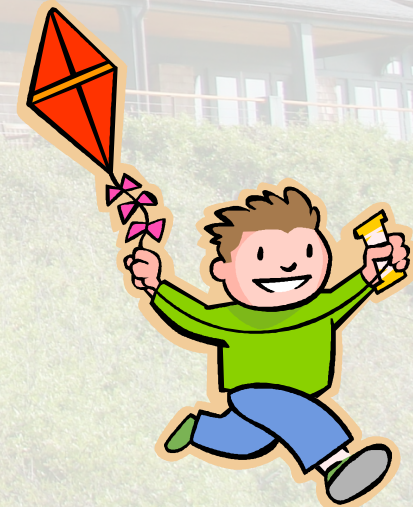
# Ongoing Opportunities

- Kiawah Presents “Our World”
  - Each spring and fall
    - Complimentary
    - Open to all
    - Reservations requested
- Conservation Matters
  - Each spring and fall
  - Held in conjunction with the Kiawah Island Natural Habitat Conservancy.



# Summer Programs

- Kids' Crafts
- Independence Day Bash
- Go Fly A Kite Day
- Various children's games and activities throughout the summer.



# Dogtoberfest

- Held annually each October.
  - Open to all Charleston-area pet lovers and includes:
    - Meet and Greet with local rescue organizations.
    - Adoption applications and pre-screening.
    - Live music and other entertainment.
    - All proceeds benefit participating rescues.



# Arts Fest

- Held each spring and fall.
- Holiday gifts, artwork, photography, home décor items, jewelry and much, much more!



# Sandcastle Community Center

## Promoting “Community”

Sandcastle Community Center  
1 Shipwatch Road  
Kiawah Island, SC 29455  
843-768-3875  
[sandcastle@kica.us](mailto:sandcastle@kica.us)

*Kiawah Island*  
COMMUNITY ASSOCIATION, INC. 